

*Dana Harrison*

DANA HARRISON - CATALOGUE

CONTACT:

[contact@danaharrison.art](mailto:contact@danaharrison.art)  
416-671-3262

Price list, last page.

UPDATED: 01/15/24

As an artist, I'm drawn to the beauty of the natural world. My focus is on botanicals, and I create large-format artwork using a scanner as my primary tool. My goal is to capture the intricate details of these plants and flowers and make them larger than life to allow you to appreciate the intricacy and feel more connected to them.

In Toronto, I was lucky to live near Don River Valley Park, a 200-hectare park spanning Pottery Road to Corktown Common and spent a lot of time walking through these spaces in the heart of the city. Eventually, we were lucky to find the little village of Warkworth, less than 2 hours east of Toronto. As a result, I'm surrounded by countryside, forests and trails and am working on cultivating a wild meadow in the back of our land. I intend to bring the wonder of nature surrounding us here into focus and into human-built spaces.

Using a scanner allows me to capture botanicals with incredible clarity and detail. For example, I can capture the tiniest patterns in a leaf or the delicate texture of a petal. I collect all the samples from locations close to my studio early in the day. Then I work to compose them on the glass of the scanner. There is a delicate balance between letting the plants and flowers be, and guiding them into a pleasing arrangement. Working upside down, where the front of the piece is resting on the glass, is a challenge but allows for my own sense of surprise and reveal as the compositions come to life through multiple passes of the scanner. I don't move or manipulate any of the arrangements digitally, moving them by hand in stages but trying not to overwork until everything starts to wilt. The only work done digitally is cleaning up specs of dust and dirt and colour correction to get the blacks as deep as possible. I wanted the compositions to look like they were floating in space, giving all the attention to the plants. I enjoy watching people move closer and try to figure out how the composition is possible. Everything on the scanner's glass is in sharp focus, and the rest falls away rapidly. It's unlike a camera lens, where you control the depth of field. I enjoy the simplicity of the scanner. It does one thing well, so I can use it as a basis for creating what I do and not get too caught up in technology.

Bringing nature into our homes, workplaces, and gathering spaces can create a more serene environment. I create these pieces hoping to encourage you to look closer at the natural world and recognize its importance in our lives.

A handwritten signature in black ink that reads "Dana Harrison". The script is fluid and cursive, with a long, sweeping underline that extends across the width of the signature.

# Biography

Dana Harrison, a graphic designer turned fine artist, grew up near Toronto, Ontario, and pursued a career in graphic design after graduating from George Brown College. With over 20 years of experience in the design industry, Dana has honed her skills and developed a keen eye for detail, composition, and visual communication.

Recently, Dana made a significant change in her life by moving to the village of Warkworth, Ontario, where she now resides on an acre of land surrounded by countryside. This move has inspired her to shift her focus to fine art while still pursuing her design practice. The time and space of living in the country have allowed her to develop a unique perspective and artistic vision, resulting in a compelling body of work.

Dana's transition from graphic design to fine art has been seamless, as her prior experience in design has provided her with a solid foundation in the principles of art and design. As a result, her work reflects a keen sense of composition, colour, and form, and she has developed a style that is uniquely her own.

## GROUP EXHIBITIONS

- 2024 Acceptance into Artist Project Contemporary Art Fair, Toronto Canada
- 2023 Kingston Square Foot Show, Tett Centre - Kingston, Ontario
- 2023 "Making Warkworth", Ah! Arts and Heritage Centre - Warkworth, Ontario
- 2023 Artist Project Contemporary Art Fair, Toronto Canada
- 2022 Artist Project Contemporary Art Fair, Toronto Canada

## SOLO EXHIBITIONS

- 2023 Royal Service Pop-up gallery, Warkworth Ontario Canada

## PRESS AND PUBLICATIONS

- 2023 New Visionary Magazine, Issue 8 - Print Magazine

## REPRESENTATION

- 2023/2024 "Flights" Series available exclusively via **Beheld.ca**

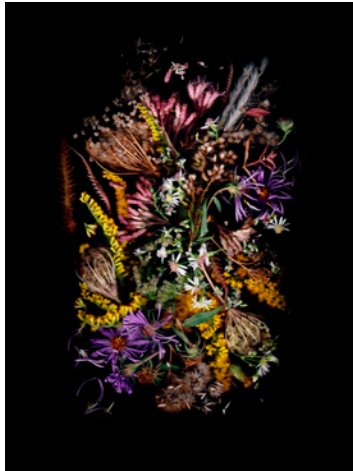
## COLLECTORS

- 2023 Intuit Canada, Toronto Canada

## EDUCATION

- 2010 Open Studio - Various Printmaking, Toronto Ontario
- 2003 Design Management, Toronto Metropolitan University, Continuing Education
- 1995 Graphic Design, George Brown College, Toronto Canada





## Biophilia

Welcome to the world of Biophilia, a breathtaking collection that celebrates the intricate beauty of nature.

Created using a flatbed scanner, plants, flowers, and botanicals are delicately arranged on the glass to capture their patterns and textures.

Each piece of art is a stunning display of the innate connection between humans and the natural world, inviting the viewer to explore the intricate details of the flora surrounding us. With meticulous attention to detail, the Biophilia series offers a unique perspective on the organic world, showcasing the beauty that can be found in even the smallest details.



**SUMMER** (2022)

Biophilia Series

**36" x 48"** EDITION OF 4 / **27" x 36"** EDITION OF 12 / **18" x 24"** EDITION OF 24

---

Printed by Image Foundry (Toronto) on Epson Premium Lustre 260gsm Fine Art Paper. Inkjet printing with archival pigment inks.  
Printed to order, shipped in protective box. Includes certificate of authenticity signed by the artist. Price list on last page.



HOME FIELD, EARLY AUGUST (2022)

Biophilia Series

36" x 48" EDITION OF 4 / 27" x 36" EDITION OF 12 / 18" x 24" EDITION OF 24

---

Printed by Image Foundry (Toronto) on Epson Premium Lustre 260gsm Fine Art Paper. Inkjet printing with archival pigment inks.  
Printed to order, shipped in protective box. Includes certificate of authenticity signed by the artist. Price list on last page.



**MEADOW, MID AUGUST** (2022)

Biophilia Series

**36" x 48"** EDITION OF 4 / **27" x 36"** EDITION OF 12 / **18" x 24"** EDITION OF 24

---

Printed by Image Foundry (Toronto) on Epson Premium Lustre 260gsm Fine Art Paper. Inkjet printing with archival pigment inks.  
Printed to order, shipped in protective box. Includes certificate of authenticity signed by the artist. Price list on last page.



**EDGE OF THE FOREST, MID AUGUST (2022)**

**Biophilia Series**

**36" x 48" EDITION OF 4 / 27" x 36" EDITION OF 12 / 18" x 24" EDITION OF 24**

---

Printed by Image Foundry (Toronto) on Epson Premium Lustre 260gsm Fine Art Paper. Inkjet printing with archival pigment inks.  
Printed to order, shipped in protective box. Includes certificate of authenticity signed by the artist. Price list on last page.





**FOREST FLOOR, MID AUGUST (2022)**

**Biophilia Series**

**36" x 48" EDITION OF 4 / 27" x 36" EDITION OF 12 / 18" x 24" EDITION OF 24**

---

Printed by Image Foundry (Toronto) on Epson Premium Lustre 260gsm Fine Art Paper. Inkjet printing with archival pigment inks.  
Printed to order, shipped in protective box. Includes certificate of authenticity signed by the artist. Price list on last page.



**FLOWER FARM, SEPTEMBER** (2022)

Biophilia Series

**36" x 48"** EDITION OF 4 / **27" x 36"** EDITION OF 12 / **18" x 24"** EDITION OF 24

---

Printed by Image Foundry (Toronto) on Epson Premium Lustre 260gsm Fine Art Paper. Inkjet printing with archival pigment inks.  
Printed to order, shipped in protective box. Includes certificate of authenticity signed by the artist. Price list on last page.



**FLOWER FARM 2, SEPTEMBER** (2022)

Biophilia Series

**36" x 48"** EDITION OF 4 / **27" x 36"** EDITION OF 12 / **18" x 24"** EDITION OF 24

---

Printed by Image Foundry (Toronto) on Epson Premium Lustre 260gsm Fine Art Paper. Inkjet printing with archival pigment inks.  
Printed to order, shipped in protective box. Includes certificate of authenticity signed by the artist. Price list on last page.



**MILLENNIUM TRAIL, SEPTEMBER** (2022)

Biophilia Series

**36" x 48"** EDITION OF 4 / **27" x 36"** EDITION OF 12 / **18" x 24"** EDITION OF 24

---

Printed by Image Foundry (Toronto) on Epson Premium Lustre 260gsm Fine Art Paper. Inkjet printing with archival pigment inks.  
Printed to order, shipped in protective box. Includes certificate of authenticity signed by the artist. Price list on last page.



**AUTUMN** (2022)

Biophilia Series

**36" x 48"** EDITION OF 4 / **27" x 36"** EDITION OF 12 / **18" x 24"** EDITION OF 24

---

Printed by Image Foundry (Toronto) on Epson Premium Lustre 260gsm Fine Art Paper. Inkjet printing with archival pigment inks.  
Printed to order, shipped in protective box. Includes certificate of authenticity signed by the artist. Price list on last page.



**WINTER** (2022)

**Biophilia Series**

**36" x 48" EDITION OF 4 / 27" x 36" EDITION OF 12 / 18" x 24" EDITION OF 24**

---

Printed by Image Foundry (Toronto) on Epson Premium Lustre 260gsm Fine Art Paper. Inkjet printing with archival pigment inks.  
Printed to order, shipped in protective box. Includes certificate of authenticity signed by the artist. Price list on last page.



## Introducing the Kaleidoscope Series (2023)

My Kaleidoscope series draws inspiration from the wonder of my favourite childhood toy. The work is derived from the Biophilia collection that is created by meticulously arranging botanicals on the glass of a flatbed scanner. I carefully select a small sample of the arrangement then mirror and duplicate it digitally to create a mesmerizing kaleidoscope pattern. I hope the resulting work transports viewers into a world of vibrant colour and design.



ARRIVING, EDGE OF THE FOREST (2023)

Kaleidoscope Series

18" x 18" EDITION OF 24 / 40" x 40" EDITION OF 4

Printed by Image Foundry (Toronto) on Epson Premium Lustre 260gsm Fine Art Paper. Inkjet printing with archival pigment inks.  
Printed to order, shipped in protective box. Includes certificate of authenticity signed by the artist. Price list on last page.





**INTO THE FOREST** (2023)

**Kaleidoscope Series**

**18" x 18" EDITION OF 24 / 40" x 40" EDITION OF 4**

Printed by Image Foundry (Toronto) on Epson Premium Lustre 260gsm Fine Art Paper. Inkjet printing with archival pigment inks.  
Printed to order, shipped in protective box. Includes certificate of authenticity signed by the artist. Price list on last page.



**MEADOW MEDITATION - 1** (2023)

Kaleidoscope Series

18" x 18" EDITION OF 24 / 40" x 40" EDITION OF 4

---

Printed by Image Foundry (Toronto) on Epson Premium Lustre 260gsm Fine Art Paper. Inkjet printing with archival pigment inks.  
Printed to order, shipped in protective box. Includes certificate of authenticity signed by the artist. Price list on last page.



**MEADOW MEADITATION - 2** (2023)

**Kaleidoscope Series**

**18" x 18" EDITION OF 24 / 40" x 40" EDITION OF 4**

---

Printed by Image Foundry (Toronto) on Epson Premium Lustre 260gsm Fine Art Paper. Inkjet printing with archival pigment inks.  
Printed to order, shipped in protective box. Includes certificate of authenticity signed by the artist. Price list on last page.



**WALKING THE MILLENIUM TRAIL - 1 (2023)**

**Kaleidoscope Series**

**18" x 18" EDITION OF 24 / 40" x 40" EDITION OF 4**

---

Printed by Image Foundry (Toronto) on Epson Premium Lustre 260gsm Fine Art Paper. Inkjet printing with archival pigment inks.  
Printed to order, shipped in protective box. Includes certificate of authenticity signed by the artist. Price list on last page.



WALKING THE MILLENIUM TRAIL - 2 (2023)

Kaleidoscope Series

18" x 18" EDITION OF 24 / 40" x 40" EDITION OF 4

---

Printed by Image Foundry (Toronto) on Epson Premium Lustre 260gsm Fine Art Paper. Inkjet printing with archival pigment inks.  
Printed to order, shipped in protective box. Includes certificate of authenticity signed by the artist. Price list on last page.



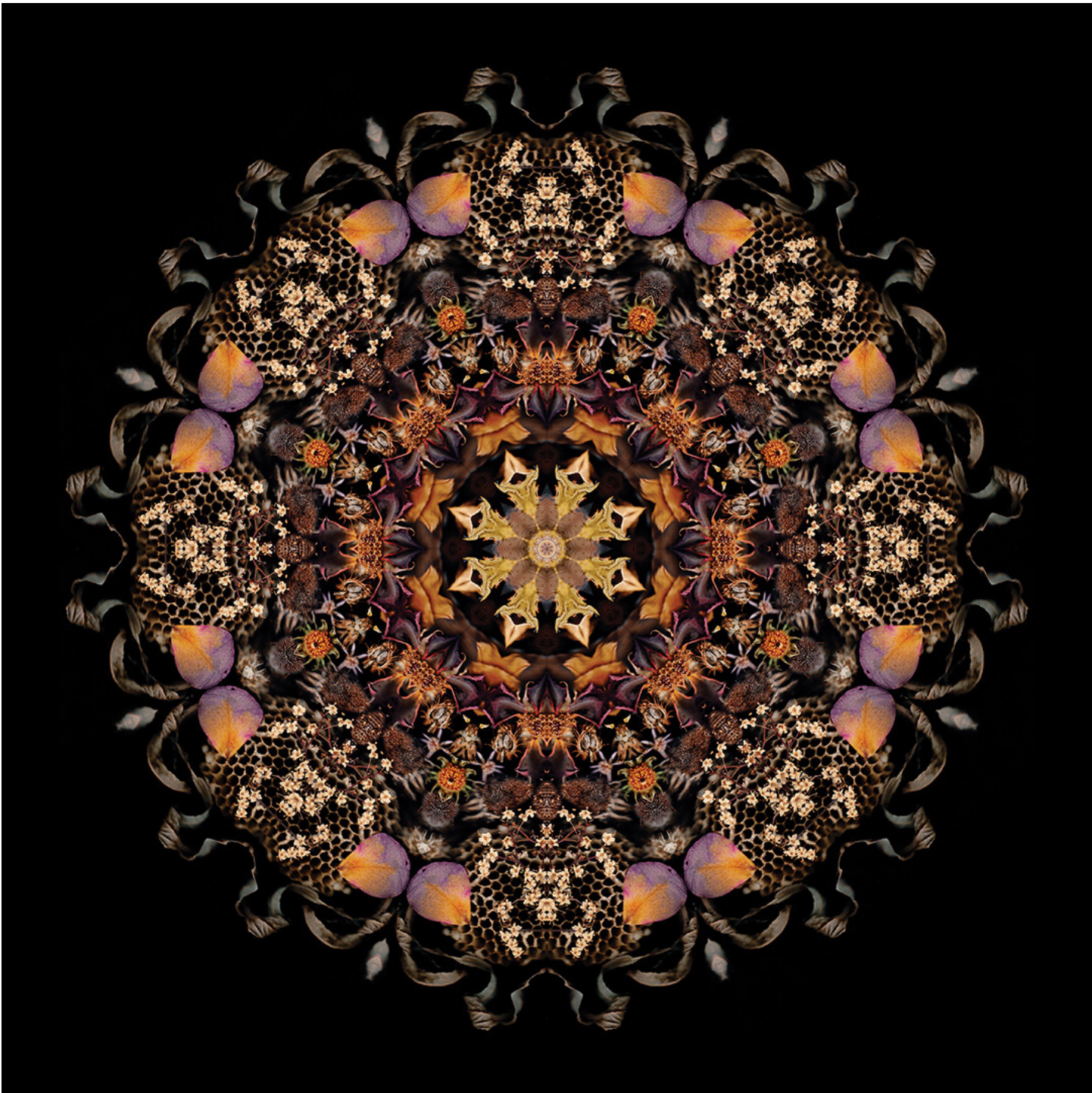
WINTER REFLECTION - 1 (2023)

Kaleidoscope Series

18" x 18" EDITION OF 24 / 40" x 40" EDITION OF 4

---

Printed by Image Foundry (Toronto) on Epson Premium Lustre 260gsm Fine Art Paper. Inkjet printing with archival pigment inks.  
Printed to order, shipped in protective box. Includes certificate of authenticity signed by the artist. Price list on last page.



WINTER REFLECTION - 2 (2023)

Kaleidoscope Series

18" x 18" EDITION OF 24 / 40" x 40" EDITION OF 4

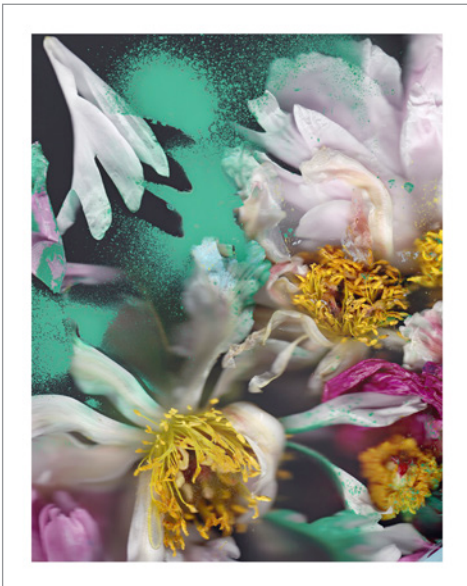
---

Printed by Image Foundry (Toronto) on Epson Premium Lustre 260gsm Fine Art Paper. Inkjet printing with archival pigment inks.  
Printed to order, shipped in protective box. Includes certificate of authenticity signed by the artist. Price list on last page.



## Flights (2024)

Discover the beauty of late spring melting into summer. Each piece captures the fading splendor of peonies in full bloom. With vivid colors and intricate details, I invite you to experience the delicate transition of seasons. Embrace the fleeting moments and timeless beauty of this captivating series.



**16" x 20"** (including 1" white border)  
EDITION OF 50

Archival Ink on  
Hahnemuhle William Turner 310gsm

Available Exclusively:  
*Beheld.ca*



## Buying art.

Investing in original art can be a transformative experience that brings beauty, personality, and character into your spaces. When you acquire original art, you're not just adding decoration but investing in a unique expression of creativity, each piece carrying its own narrative. It's a chance to showcase your individuality and support emerging talents, enriching your spaces and life with meaningful artistic expression.

### a note on editions

Limited editions in fine art involve producing a set number of prints or copies of a specific artwork to maintain its exclusivity and value. No further copies are made once this set number is reached, making each piece rare and sought after. Limited editions ensure consistent quality and allow artists and collectors to preserve the integrity and value of their work.

*Dana Harrison*

### BIOPHILIA SERIES

Printed to order by Image Foundry (Toronto) on Epson Premium Lustre 260gsm Fine Art Paper. Inkjet printing with archival pigment inks. Printed to order, shipped in protective box. Includes certificate of authenticity signed by the artist.

**36" x 48"** EDITION OF 4      \$1400  
**27" x 36"** EDITION OF 12      \$825  
**18" x 24"** EDITION OF 24      \$350

### KALEIDOSCOPE SERIES

Printed to order by Image Foundry (Toronto) on Epson Premium Lustre 260gsm Fine Art Paper. Inkjet printing with archival pigment inks. Printed to order, shipped in protective box. Includes certificate of authenticity signed by the artist.

**40" x 40"** EDITION OF 4      \$1300  
**18" x 18"** EDITION OF 24      \$275

### FLIGHTS SERIES

Printed to order by Image Foundry (Toronto) on Hahnemuhle William Turner 310gsm Fine Art Paper. Inkjet printing with archival pigment inks. Printed to order, shipped in protective box. Includes certificate of authenticity signed by the artist.

**16" x 20"** (including 1" white border)  
EDITION OF 50      \$320

Flight Series available exclusively at: *Beheld.ca*

*To arrange a purchase  
or studio visit please  
contact me:*

### DIRECT

contact@danaharrison.art  
416-671-3262  
(MONDAY - FRIDAY 10-4PM)

### STUDIO LOCATION

Warkworth, Ontario

### VISIT MY WEBSITE

*www.danaharrison.art*

### INSTAGRAM

@DanaHarrison\_art

---

*I am currently open to exploring:*

*Gallery Representation*

*Working with Art Consultants, Interior Designers,  
Property Developers & Stylists*

*Group and solo show opportunities.*